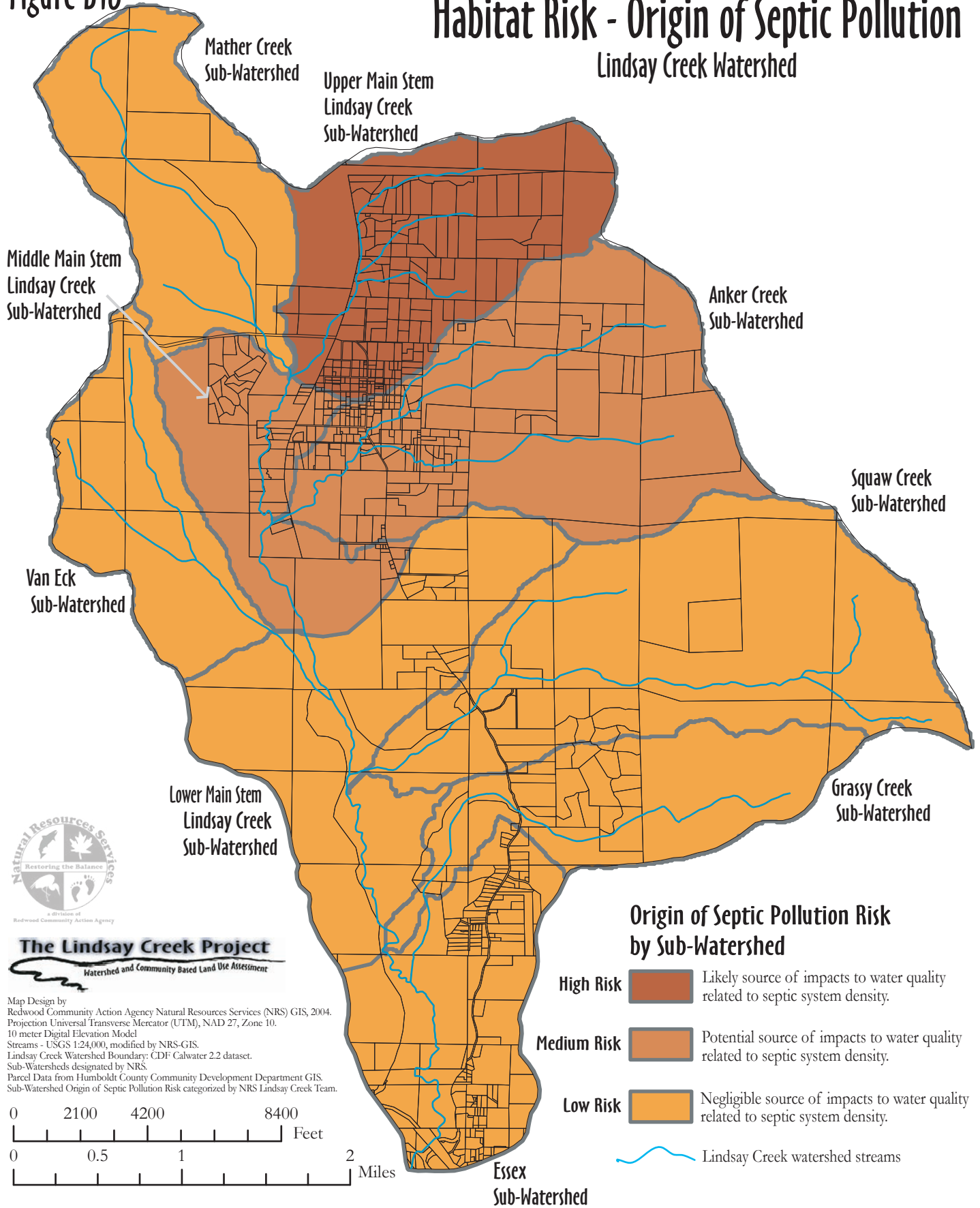


Figure B16

Habitat Risk - Origin of Septic Pollution Lindsay Creek Watershed



The Lindsay Creek Project
Watershed and Community Based Land Use Assessment

Map Design by Redwood Community Action Agency Natural Resources Services (NRS) GIS, 2004.
 Projection Universal Transverse Mercator (UTM), NAD 27, Zone 10.
 10 meter Digital Elevation Model
 Streams - USGS 1:24,000, modified by NRS-GIS.
 Lindsay Creek Watershed Boundary: CDF Calwater 2.2 dataset.
 Sub-Watersheds designated by NRS.
 Parcel Data from Humboldt County Community Development Department GIS.
 Sub-Watershed Origin of Septic Pollution Risk categorized by NRS Lindsay Creek Team.

